

# ROTINA 380 | 380 R

## High speed with space saving design

High performance unit supporting a wide array of accessories for multiple applications in just one rotor. Its size and performance make it the ideal benchtop centrifuge for most clinical, research and industrial laboratories. This unit is available with refrigeration and a temperature range from -20 °C to +40 °C (ROTINA 380 R).

### FEATURES

- RPM: 50 - 15,000 min<sup>-1</sup> – adjustable in increments of 10
- RCF: 50 - 24,400 – adjustable in increments of 1
- Max. capacity: 4 x 290 ml
- Choice of 8 rotors
- IVDR-conform according to regulation (EU) 2017/746
- Max. noise level of 54 dB(A) with rotor 1760
- Easy operation with keypad and control knob
- 98 program memories for more individuality
- 9 individual acceleration and 10 deceleration stages
- Model 380 R coolable from -20 to +40 °C with pre-cooling function

### FIELDS OF APPLICATION

- Hospitals
- Hematological laboratories
- Small blood centers
- Pharmaceutical laboratories
- Food analyzing laboratories
- University / Academic research
- Forensic laboratories
- Paternity testing laboratories
- Environmental testing laboratories
- Cell culture laboratories



Centrifuge packages for the model can be found on [page 105](#)



More information about the control panel can be found on [page 202](#)

**CYTO**

Cyto system available for this model. More information on [page 180](#)



ROTINA 380



ROTINA 380 R



according to regulation (EU) 2017/746

## TECHNICAL DATA

	<b>ROTINA 380</b> non-refrigerated	<b>ROTINA 380 R</b> refrigerated
voltage *)	200 – 240 V 1 ~	200 – 240 V 1 ~
frequency	50 – 60 Hz	50 – 60 Hz
consumption	650 VA	1,300 VA
emission, immunity	EN/IEC 61326-1, class B	EN/IEC 61326-1, class B
max. capacity	4 x 290 ml	4 x 290 ml
max. RPM	15,000 min <sup>-1</sup>	15,000 min <sup>-1</sup>
max. RCF	24,400	24,400
running time	1 – 99 h: 59 min: 59 sec, ∞ continuous run, short cycle mode	1 – 99 h: 59 min: 59 sec, ∞ continuous run, short cycle mode
dimensions (WxDxH)	457x600x418 mm	457x750x418 mm
weight	approx. 51 kg	approx. 81 kg
noise level	54 dB (A) with rotor 1760	54 dB (A) with rotor 1760
temperature control, infinitely variable	-	from -20 to +40 °C
<b>Cat. No.</b>	<b>1701</b>	<b>1706</b>
100 – 127 V 1 ~ / 50 – 60 Hz *)	1701-01	1706-01
consumption	700 VA	1,400 VA
emission, immunity	FCC class B	FCC class B
weight	approx. 58.5 kg	approx. 88.5 kg




\*) Other voltages on request.

## AVAILABLE ROTORS

### SWING-OUT ROTORS

	angle	max. RPM	max. capacity	Cat. No.	page
 swing-out rotor, 4-place	90°	5,000 min <sup>-1</sup>	4x290 ml	<b>1754</b>	96
 swing-out rotor, 4-place	90°	4,000 min <sup>-1</sup>	4x290 ml	<b>1798</b>	98
 swing-out rotor, 6-place	90°	4,000 min <sup>-1</sup>	6x50 ml	<b>1726</b>	100
 swing-out rotor, 2-place	90°	4,000 min <sup>-1</sup>	10 plates	<b>1760</b>	102
 swing-out rotor, 2-place	90°	5,100 min <sup>-1</sup>	10 plates	<b>1770</b>	102

### ANGLE ROTORS

 angle rotor, 6-place	45°	10,000 l 11,000 min <sup>-1</sup>	6x94 ml	<b>1720</b>	103
 angle rotor, 6-place	45°	10,000 l 11,000 min <sup>-1</sup>	6x94 ml	<b>1792</b>	104
 angle rotor, 30-place	45°	15,000 min <sup>-1</sup>	30x2 ml	<b>1789-A</b>	105

## SWING-OUT ROTOR, 4-PLACE | 1754



### Rotor

max. RPM   max. RCF	5,000 min <sup>1)</sup>   4,863
max. capacity	4x290 ml
run-up   run-down, braked in sec	42   27
angle   max. noise level	90°   60 dB (A)
temperature in °C <sup>1)</sup>	0
<b>Cat. No.</b>	<b>1754</b>



### Bucket

lid bioseal <sup>5)</sup>	1751
<b>Cat. No.</b>	<b>1752</b>



### Vessels

capacity in ml	1.5	2.0	3	4	5	6	7	9	15	20	25	45	50	94	100	
Ø x L in mm	11x38	11x38	10x60	12x60	12x75	12x82	12x100	14x100	17x100	21x100	24x100	31x100	34x100	38x106	40x115	
max. RCF <sup>2)</sup>	3,494 / 4,779	3,494 / 4,779	4,779	4,668	4,668	4,668	4,668	4,668	4,668	4,668	4,668	4,668	4,668	4,807	4,640	
radius in mm	125 / 171	125 / 171	171	167	167	167	167	167	167	167	167	167	167	172	166	
<b>Cat. No.</b>	<b>microliter tubes</b>			<b>tubes<sup>2)</sup></b>												

### Adapter

boring Ø x L in mm	11.2x39.5	11.2x39.5	11.2x39.5	12.5x56	12.5x56	12.5x56	12.5x56	17.5x62	17.5x62	25.5x81	25.5x81	35.5x81	35.5x81	38.5x80	41x97
vessels per rotor	144	144	72	96	96	96	96	52	52	24	24	12	12	8	4
<b>Cat. No.</b>	<b>1761</b>	<b>1761</b>	<b>1761</b>	<b>1762-A</b>	<b>1762-A</b>	<b>1762-A</b>	<b>1762-A</b>	<b>1763-A</b>	<b>1763-A</b>	<b>1764</b>	<b>1764</b>	<b>1765</b>	<b>1765</b>	<b>1777</b>	<b>1767</b>

### Vessels

capacity in ml	100	250	1.1-1.4	2.6-2.9	2.7-3	4.5-5	4.5-5	4.5-5	4.9	4.9	7.5-8.2	9-10	10	1.6-5	4-7
Ø x L in mm	44x100	65 x 115	8 x 66	13 x 65	11 x 66	15 x 75	11 x 92	11 x 92	13 x 90	13 x 90	15 x 92	16 x 92	15 x 102	13 x 75	13 x 100
max. RCF <sup>2)</sup>	4,640	4,640	4,668	4,668	4,668	4,668	4,668	4,668	4,668	4,668	4,668	4,668	4,668	4,668	4,668
radius in mm	166	166	167	167	167	167	167	167	167	167	167	167	167	167	167
<b>Cat. No.</b>	<b>tubes<sup>2)</sup></b>		<b>blood collection tubes / urine tubes</b>												

### Adapter

boring Ø x L in mm	45x87	66x104.5	9x49	13.5x54	12.5x56	17.5x62	12.5x56	13.2x72	13.5x54	13.2x72	17.5x62	17.5x62	17.5x62	13.5x54	13.5x54
vessels per rotor	4	4	96	64	96	52	96	76	64	76	52	52	52	64	64
<b>Cat. No.</b>	<b>1766</b>	<b>1768</b>	<b>1781</b>	<b>1783-A</b>	<b>1762-A</b>	<b>1763-A</b>	<b>1762-A</b>	<b>1787</b>	<b>1783-A</b>	<b>1787</b>	<b>1763-A</b>	<b>1763-A</b>	<b>1763-A</b>	<b>1783-A</b>	<b>1783-A</b>

1) For cooled versions: Lowest temperature achievable with precooling and max. speed.  
 2) Please note that the RCF values indicated refer only to rotor performance. The max. permissible RCF of tubes used should be verified with the individual manufacturers. The max. RCF for glass tubes annotated with footnote 2) is 4,000.  
 5) Tested by TÜV in conformity with DIN EN 61010, section 2-020.

## SWING-OUT ROTOR, 4-PLACE | 1754



### Rotor

max. RPM   max. RCF	5,000 min <sup>-1</sup>   4,863
max. capacity	4 x 290 ml
run-up   run-down, braked in sec	42   27
angle   max. noise level	90°   60 dB (A)
temperature in °C <sup>1)</sup>	0
<b>Cat. No.</b>	<b>1754</b>

### Bucket

lid bioseal <sup>5)</sup>	1751
<b>Cat. No.</b>	<b>1752</b>



### Vessels

capacity in ml	4 – 7	4 – 7	8	8.5 – 10	5	15	50	12	25	30	50	50	14	10	30
Ø x L in mm	13x100	16x75	16x125	16x100	17x59	17x120	29 x 115	17x100	25x90	25x110	29x115	29x115	16,5x106	16x80	26x95
max. RCF <sup>2)</sup>	4,668	4,668	4,668	4,668	4,863	4,863	4,863	4,696	4,528	4,528	4,752	4,752	4,668	4,668	4,807
radius in mm	167	167	167	167	174	174	174	168	162	162	170	170	167	167	172
<b>Cat. No.</b>	<b>blood collection tubes / urine tubes</b>				<b>-</b>		<b>tubes with screw cap</b>								



### Adapter

boring Ø x L in mm	13.2x72	17.5x62	17.5x62 <sup>21)</sup>	17.5x62	17x52	17x84	30x84	17x78	26.5x72	26.5x72	30x80	30x80	17.5x62	17.5x62	26.5x70
vessels per rotor	76	52	12	52	32	36	16	36	20	20	16	16	52	52	24
<b>Cat. No.</b>	<b>1787</b>	<b>1763-A</b>	<b>1763-A</b>	<b>1763-A</b>	<b>1738</b>	<b>1771-A</b>	<b>1772-A</b>	<b>1773</b>	<b>1779</b>	<b>1779</b>	<b>1774-A</b>	<b>1774-A</b>	<b>1763-A</b>	<b>1763-A</b>	<b>1775</b>

### Vessels

capacity in ml	50	85	94	175	175 <sup>3.3)</sup>	200	225	250	290 <sup>3.3)</sup>
Ø x L in mm	29x107	38x106	38x106	61 x 118	62 x 144	60 x 130	61 x 137	62 x 122	62 x 137
max. RCF <sup>2)</sup>	4,752	4,807	4,807	4,863	4,863	4,863	4,863	4,863	4,863
radius in mm	170	172	172	174	174	174	174	174	174
<b>Cat. No.</b>	<b>tubes with screw cap</b>			<b>Falcon</b>	<b>Nalgene</b>	<b>Nunc®</b>	<b>Falcon</b>	<b>5127<sup>24)</sup></b>	<b>-<sup>24)</sup></b>

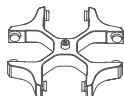


### Adapter

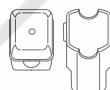
boring Ø x L in mm	30 x 80	38.5 x 80	38.5 x 80	62 x 111	62 x 111	62 x 111	62 x 111	62 x 100	62 x 100
vessels per rotor	16	8	8	4	4	4	4	4	4
<b>Cat. No.</b>	<b>1774-A</b>	<b>1777</b>	<b>1777</b>	<b>1782</b>	<b>1778</b>	<b>1778</b>	<b>1782</b>	<b>1769</b>	<b>1769</b>

- 1) For cooled versions: Lowest temperature achievable with precooling and max. speed.
- 2) Please note that the RCF values indicated refer only to rotor performance. The max. permissible RCF of tubes used should be verified with the individual manufacturers. The max. RCF for glass tubes annotated with footnote 2) is 4,000.
- 3.3) When using these tubes, bucket 1752 or 5051 cannot be closed with lid 1751 or 5053.
- 5) Tested by the TÜV in conformity with DIN EN 61010, section 2-020.
- 21) Adapter must be loaded as illustrated.
- 24) At temperatures of over +40 °C and / or when not filled to capacity, bottles may warp during centrifugation.

## SWING-OUT ROTOR, 4-PLACE | 1798



<b>Rotor</b>	
max. RPM   max. RCF	4,000 min <sup>-1</sup>   2,898
max. capacity	4 x 100 ml
run-up   run-down, braked in sec	24   17
angle   max. noise level	90°   55 dB (A)
temperature in °C <sup>1)</sup>	-8
<b>Cat. No.</b>	<b>1798</b>



<b>Bucket</b>	
lid	5053
<b>Cat. No.</b>	<b>5051</b>



<b>Vessels</b>														
capacity in ml	1.5	2	1.5	2	3	5	6	7	9	15	25	50	100	100
Ø x L in mm	11 x 38	11 x 38	11 x 38	11 x 38	10 x 60	12 x 75	12 x 82	12 x 100	14 x 100	17 x 100	24 x 100	34 x 100	40 x 115	44 x 100
max. RCF <sup>2)</sup>	1,950 / 2,826	1,950 / 2,826	2,826	2,826	2,737	2,773	2,773	2,755	2,773	2,755	2,755	2,755	2,755	2,755
radius in mm	109 / 158	109 / 158	158	158	153	155	155	154	155	154	154	154	154	154
<b>Cat. No.</b>	<b>microliter tubes</b>				<b>tubes<sup>2)</sup></b>									

<b>Adapter</b>														
boring Ø x L in mm	12.5 x 37	12.5 x 37	11.5 x 50	11.5 x 50	11 x 41.5	12.5 x 39.5	12.5 x 39.5	12.5 x 82.5	16 x 47.5	17.5 x 82.5	26 x 82.5	36 x 82.5	42 x 86	45.5 x 86
vessels per rotor	160	160	64	64	80	80	80	80	48	48	20	8	4	4
<b>Cat. No.</b>	<b>5257</b>	<b>5257</b>	<b>5281</b>	<b>5281</b>	<b>5267</b>	<b>5227</b>	<b>5227</b>	<b>5247<sup>15)</sup></b>	<b>5264</b>	<b>5248<sup>15)</sup></b>	<b>5242</b>	<b>5243</b>	<b>5249</b>	<b>5262</b>

<b>Vessels</b>													
capacity in ml	1.1–1.4	2.6–2.9	2.7–3	4–5.5	4.5–5	4.9	7.5–8.2	9–10	10	1.6–5	4–7	4–7	8.5–10
Ø x L in mm	8 x 66	13 x 65	11 x 66	15 x 75	11 x 92	13 x 90	15 x 92	16 x 92	15 x 102	13 x 75	13 x 100	16 x 75	16 x 100
max. RCF <sup>2)</sup>	2,737	2,808	2,773	2,773	2,773	2,808	2,773	2,755	2,755	2,808	2,808	2,773	2,755
radius in mm	153	157	155	155	155	157	155	154	154	157	157	155	154
<b>Cat. No.</b>	<b>blood collection tubes / urine tubes</b>												

<b>Adapter</b>													
boring Ø x L in mm	11 x 41.5	13.5 x 49.5	12.5 x 39.5	16 x 47.5	12.5 x 39.5	13.5 x 49.5	16 x 47.5	17.6 x 82.5	17.6 x 82.5	13.5 x 49.5	13.5 x 49.5	16 x 47.5	17.5 x 82.5
vessels per rotor	80	48	80	48	80	48	48	44	44	48	48	48	48
<b>Cat. No.</b>	<b>5267</b>	<b>5268</b>	<b>5227</b>	<b>5264</b>	<b>5227</b>	<b>5268</b>	<b>5264</b>	<b>5258</b>	<b>5258</b>	<b>5268</b>	<b>5268</b>	<b>5264</b>	<b>5248</b>

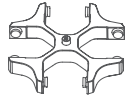
<b>Vessels</b>							
capacity in ml	30	50	15	12	30	50	1–8
Ø x L in mm	25 x 110	29 x 115	17 x 120	17 x 100	25 x 110	29 x 115	simple / multiple
max. RCF <sup>2)</sup>	2,755	2,826	2,898	2,898	2,755	2,755	1,735 / 2,737
radius in mm	154	158	162	162	154	154	97 / 153
<b>Cat. No.</b>	<b>tubes with screw cap</b>						<b>cyto chambers</b>

<b>Adapter</b>							
boring Ø x L in mm	26 x 82.5	30 x 90	17.2 x 90	17.2 x 90	26 x 82.5	36 x 82.5	-
vessels per rotor	20	8	28	28	20	8	8
<b>Cat. No.</b>	<b>5266</b>	<b>5259</b>	<b>6306</b>	<b>6306</b>	<b>5266</b>	<b>5243</b>	<b>5280</b>

**CYTO** Cyto system available for this model. More information on page 178

1) For cooled versions: Lowest temperature achievable with precooling and max. speed.  
 2) Please note that the RCF values indicated refer only to rotor performance. The max. permissible RCF of tubes used should be verified with the individual manufacturers. The max. RCF for glass tubes annotated with footnote 2) is 4,000.  
 3.3) When using these tubes, bucket 1752 or 5051 cannot be closed with lid 1751 or 5053.  
 15) Also available with decanting aid. (Cat. No. 5247-91 or 5248-91).

## SWING-OUT ROTOR, 4-PLACE | 1798



Rotor	
max. RPM   max. RCF	4,000 min <sup>-1</sup>   3,095
max. capacity	4 x 290 ml
run-up   run-down, braked in sec	24   17
angle   max. noise level	90°   56 dB (A)
temperature in °C <sup>1)</sup>	-8
<b>Cat. No.</b>	<b>1798</b>



Bucket	
lid bioseal <sup>5)</sup>	5093
<b>Cat. No.</b>	<b>5092</b>



Vessels															
capacity in ml	5	6	7	15	25	50	100	100	250	15	30	50	12	25	30
Ø x L in mm	12x75	12x82	12x100	17x100	24x100	34x100	44x100	40x115	65x115	17x120	25x110	29x115	17x100	25x90	25x110
max. RCF <sup>2)</sup>	3,005	3,005	3,005	2,952	2,898	2,952	2,952	2,952	3,095	3,095	2,898	3,095	3,005	2,826	2,898
radius in mm	168	168	168	165	162	165	165	165	173	173	162	173	168	158	162
<b>Cat. No.</b>	<b>tubes<sup>2)</sup></b>								<b>tubes with screw cap</b>						

Adapter															
boring Ø x L in mm	12.8x42	12.8x42	12.8x79.5	17.5x56.7	25.5x74	35.5x77.5	45.5x76.5	42x76.5	65x103	17x74	25.5x82	30x85	17.5x79.5	26x73	25.5x74
vessels per rotor	48	48	48	32	16	4	4	4	4	28	16	8	28	12	16
<b>Cat. No.</b>	<b>5128</b>	<b>5128</b>	<b>5120</b>	<b>5136</b>	<b>5122</b>	<b>5124</b>	<b>5125</b>	<b>5126</b>	<b>1791</b>	<b>5129</b>	<b>5122</b>	<b>5123</b>	<b>5121</b>	<b>5134</b>	<b>5122</b>

Vessels															
capacity in ml	50	10	250	290	1.1-1.4	2.7-3	4-4.5	4.9	7.5-8.2	9-10	10	1.6-5	4-7	4-7	8
Ø x L in mm	29x115	16x80	61x122	62x137	8x66	11x66	15x75	13x90	15x92	16x92	15x102	13x75	16x75	13x100	16x125
max. RCF <sup>2)</sup>	3,023	2,952	3,095	3,095	2,952	2,952	2,952	2,952	2,952	2,952	2,952	2,952	2,952	3,005	3,059
radius in mm	169	165	173	173	165	165	165	165	165	165	165	165	165	168	171
<b>Cat. No.</b>	<b>tubes with screw cap</b>		<b>5127<sup>24)</sup></b>	<b>-<sup>24)</sup></b>	<b>blood collection tubes / urine tubes</b>										

Adapter																
boring Ø x L in mm	30x99	17.5x56.7	63x90	63x90	12.8x54.5	12.8x54.5	17.5x56.7	17.5x56.7	17.5x56.7	17.5x56.7	17.5x56.7	17.5x56.7	12.8x54.5	17.5x56.7	12.8x79.5	17.5x79.5
vessels per rotor	8	32	4	4	48	48	32	32	32	32	32	32	48	32	48	28
<b>Cat. No.</b>	<b>5135</b>	<b>5136</b>	<b>6319</b>	<b>6319</b>	<b>5138</b>	<b>5138</b>	<b>5136</b>	<b>5137</b>	<b>5136</b>	<b>5136</b>	<b>5136</b>	<b>5136</b>	<b>5138</b>	<b>5136</b>	<b>5120</b>	<b>5121<sup>4)</sup></b>

Vessels	
capacity in ml	8.5 - 10
Ø x L in mm	16x100
max. RCF <sup>2)</sup>	2,952
radius in mm	165
<b>Cat. No.</b>	<b>-</b>

Adapter	
boring Ø x L in mm	17.5x56.7
vessels per rotor	32
<b>Cat. No.</b>	<b>5136</b>

- 1) For cooled versions: Lowest temperature achievable with precooling and max. speed.
- 2) Please note that the RCF values indicated refer only to rotor performance. The max. permissible RCF of tubes used should be verified with the individual manufacturers.  
The max. RCF for glass tubes annotated with footnote 2) is 4,000.
- 3.5) When using these tubes, bucket 5092 cannot be closed with lid 5053.
- 4) Please remove the spacer.
- 5) Tested by the TÜV in conformity with DIN EN 61010, section 2-020.
- 24) At temperatures of over +40 °C and / or when not filled to capacity, bottles may warp during centrifugation.

## SWING-OUT ROTOR, 6-PLACE | 1726



### Rotor

max. RPM   max. RCF	4,000 min <sup>-1</sup>   2,808
max. capacity	6 x 50 ml
run-up   run-down, braked in sec	19   18
angle   temperature in °C <sup>1)</sup>	90°   -6
<b>Cat. No.</b>	<b>1726</b>



### Vessels

capacity in ml	5	5	6	7	9	15	20	25	45	50	8.5–10	30	1–8	
Ø x L in mm	12x75	12x75	12x82	12x100	14x100	17x100	21x100	24x100	31x100	34x100	16x100	26x95	simple / multiple	
max. RCF <sup>2)</sup>	2,576	2,522	2,665	2,665	2,665	2,665	2,719	2,808	2,719	2,808	2,665	2,808	2,003	
radius in mm	144	141	149	149	149	149	152	157	152	157	149	157	112	
<b>Cat. No.</b>	tubes <sup>2)</sup>											-	-	cyto chambers



### Carrier

boring Ø x L in mm	12.5x74	14.5x63	12.5x74	12.5x74	14.6x74	17.6x74	21.5x74	25x78	32x74	35x78	17.6x74	25x78	-
vessels per rotor	24	102	24	24	30	24	12	12	6	6	24	12	6
<b>Cat. No.</b>	<b>1369-91</b>	<b>1372</b>	<b>1369-92</b>	<b>1369-92</b>	<b>1370</b>	<b>1369</b>	<b>1346</b>	<b>1745</b>	<b>1345</b>	<b>1746</b>	<b>1369</b>	<b>1745</b>	<b>1660</b>

### CYTO

Cyto system available for this model. More information on page 180

## SWING-OUT ROTOR, 6-PLACE | 1726



### Rotor

max. RPM   max. RCF	4,000 min <sup>-1</sup>   2,808
max. capacity	42 x 15 ml
run-up   run-down, braked in sec	19   18
angle   max. noise level	90°   54 dB (A)
temperature in °C <sup>1)</sup>	-6
<b>Cat. No.</b>	<b>1726</b>

### Carrier

<b>Cat. No.</b>	<b>1742</b>
-----------------	-------------



### Vessels

capacity in ml	15	2.6–2.9	4–4.5	7.5–8.2	9–10	10	1.6–5	4–7	8.5–10	15
Ø x L in mm	17x100	13x65	15x75	15x92	16x92	15x102	13x75	16x75	16x100	17x120
max. RCF <sup>2)</sup>	2,808	2,683	2,683	2,808	2,808	2,808	2,683	2,683	2,808	2,808
radius in mm	157	150	150	157	157	157	150	150	157	157
<b>Cat. No.</b>	- <sup>2)</sup>	blood collection tubes / urine tubes								-



### Spacer

boring Ø x L in mm	17.6 x 78	17.6 x 78	17.6 x 78	17.6 x 78	17.6 x 78	17.6 x 78	17.6 x 78	17.6 x 78	17.6 x 78	17.6 x 78
vessels per rotor	42	42	42	42	42	18	42	42	42	18
<b>Cat. No.</b>	-	<b>0716</b>	<b>0716</b>	-	-	-	<b>0716</b>	<b>0716</b>	-	-

- For cooled versions: Lowest temperature achievable with precooling and max. speed.
- Please note that the RCF values indicated refer only to rotor performance. The max. permissible RCF of tubes used should be verified with the individual manufacturers. The max. RCF for glass tubes annotated with footnote 2) is 4,000.
- Adapter must be loaded as illustrated.

## SWING-OUT ROTOR, 6-PLACE | 1726



### Rotor

max. RPM   max. RCF	4,000 min <sup>-1</sup>   2,325
max. capacity	72 x 4 ml
run-up   run-down, braked in sec	19   18
angle   max. noise level	90°   54 dB (A)
temperature in °C <sup>1)</sup>	-6
<b>Cat. No.</b>	<b>1726</b>

### Bucket

<b>Cat. No.</b>	<b>1366</b>
-----------------	-------------



### Vessels

capacity in ml	1.5	2.0	1	3	4
Ø x L in mm	11 x 38	11 x 38	6 x 45	10 x 60	12 x 60
max. RCF <sup>2)</sup>	2,325	2,325	2,308	2,290	2,290
radius in mm	130	130	129	128	128
<b>Cat. No.</b>	<b>microliter tubes</b>	<b>Rhesus</b>	<b>tubes<sup>2)</sup></b>		



### Adapter

boring Ø x L in mm	11.5 x 38	11.5 x 38	6.5 x 23	10.5 x 23	12.5 x 42
vessels per rotor	54	54	180	72	72
<b>Cat. No.</b>	<b>5277</b>	<b>5277</b>	<b>1357</b>	<b>1327</b>	<b>1326</b>

## SWING-OUT ROTOR, 6-PLACE | 1726



### Rotor

max. RPM   max. RCF	4,000 min <sup>-1</sup>   2,808
max. capacity	60 x 9 ml
run-up   run-down, braked in sec	19   18
angle   max. noise level	90°   54 dB (A)
temperature in °C <sup>1)</sup>	-6
<b>Cat. No.</b>	<b>1726</b>

### Carrier

<b>Cat. No.</b>	<b>1741</b>
-----------------	-------------



### Vessels

capacity in ml	9	1.1 – 1.4	4.5 – 5	4.9	4 – 7
Ø x L in mm	14 x 100	8 x 66	11 x 92	13 x 90	13 x 100
max. RCF <sup>2)</sup>	2,773	2,773	2,808	2,808	2,808
radius in mm	155	155	157	157	157
<b>Cat. No.</b>	<b>-<sup>2)</sup></b>	<b>blood collection tubes / urine tubes</b>			



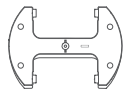
### Adapter

boring Ø x L in mm	14.6 x 78	14.6 x 78	14.6 x 78 <sup>21)</sup>	14.6 x 78	14.6 x 78
vessels per rotor	60	60	60	60	60
<b>Cat. No.</b>	<b>0701</b>	<b>0701</b>	<b>-</b>	<b>-</b>	<b>-</b>

- For cooled versions: Lowest temperature achievable with precooling and max. speed.
- Please note that the RCF values indicated refer only to rotor performance. The max. permissible RCF of tubes used should be verified with the individual manufacturers.  
The max. RCF for glass tubes annotated with footnote 2) is 4,000.
- Packaging unit 10 pieces.
- Adapter must be loaded as illustrated.



## SWING-OUT ROTOR, 2-PLACE | 1760



### Rotor

max. RPM   max. RCF	4,000 min <sup>-1</sup>   2,397
max. capacity	10 plates
run-up   run-down, braked in sec	30   23
angle   max. noise level	90°   54 dB (A)
temperature in °C <sup>1)</sup>	-8
<b>Cat. No.</b>	<b>1760</b>



### Plates

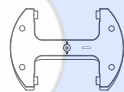
W x D x H in mm	128x86x15	128x86x17.5	128x86x22	128x86x44.5	128x86x46	128x86x83	84x59x11	124x82x20	-
capacity in ml	-	-	-	-	-	-	-	-	0.2
max. RCF <sup>2)</sup>	2,397	2,397	2,397	2,397	2,397	2,397	2,397	2,397	2,397
radius in mm	134	134	134	134	134	134	134	134	134
<b>Cat. No.</b>	<b>MTP</b>	<b>MTP</b>	<b>CP</b>	<b>DWP</b>	<b>MS</b>	<b>QP</b>	<b>Microtest plates</b>	<b>PCR plate</b>	<b>PCR strips</b>



### Bucket

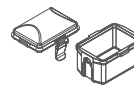
boring Ø x L in mm	-	-	-	-	-	-	-	-	-
plates / strips per rotor	10	8	6	2	2	2	4	2	48 x 8
<b>Cat. No.</b>	<b>1753-A</b>	<b>1753-A</b>	<b>1753-A</b>	<b>1753-A</b>	<b>1753-A</b>	<b>1753-A</b>	<b>1753-A</b>	<b>1753-A+1485</b>	<b>1753-A+1485</b>

## SWING-OUT ROTOR, 2-PLACE | 1770



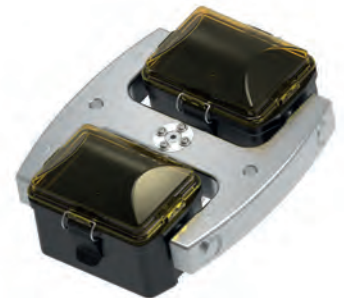
### Rotor

max. RPM   max. RCF	5,100 min <sup>-1</sup>   3,926
capacity in ml	10 plates
run-up   run-down, braked in sec	65   30
angle   temperature in °C <sup>1)</sup>	90°   -3
<b>Cat. No.</b>	<b>1770</b>



### Bucket

lid bioseal <sup>3)</sup>	4627
<b>Cat. No.</b>	<b>4745</b>



### Plates

W x D x H in mm	128x86x15	128x86x17.5	128x86x22	128x86x44.5	128x86x46	128x86x83	84x59x11	124x82x20	-
Ø x L in mm	-	-	-	-	-	-	-	-	0.2
max. RCF <sup>2)</sup>	3,926	3,926	3,926	3,926	3,926	3,926	3,926	3,926	3,926
radius in mm	135	135	135	135	135	135	135	135	135
<b>Cat. No.</b>	<b>MTP</b>	<b>MTP</b>	<b>CP</b>	<b>DWP</b>	<b>MS</b>	<b>QP</b>	<b>Microtest plates</b>	<b>PCR plate</b>	<b>PCR strips</b>



### Removal frame

boring Ø x L in mm	-	-	-	-	-	-	-	-	-
plates / strips per rotor	10	8	8	2	2	2	4	2	24 x 8
<b>Cat. No.</b>	<b>4626</b>	<b>4626</b>	<b>4626</b>	<b>4626</b>	<b>4626</b>	<b>4626</b>	<b>4626</b>	<b>4626 + 1485</b>	<b>4626 + 1485</b>

## ANGLE ROTOR, 6-PLACE | 1720



### Rotor

max. RPM	ROTINA 380   380 R	10,000 min <sup>-1</sup>   11,000 min <sup>-1</sup>
max. RCF		13,528   16,369
max. capacity		6 x 94 ml
run-up / run-down, braked in sec		39 / 36   45 / 44
angle   max. noise level		45°   59 dB (A)
temperature in °C <sup>1)</sup>		+1
<b>Cat. No.</b>		<b>1720</b>



### Vessels

capacity in ml	1.5	2.0	15	25	50	94	7.5 – 8.2	9 – 10	8.5 – 10	15	50	10	30	50	85	
Ø x L in mm	11 x 38	11 x 38	17 x 100	24 x 100	34 x 100	38 x 102	15 x 92	16 x 92	16 x 100	17 x 120	29 x 115	16 x 80	26 x 95	29 x 107	38 x 106	
max. RCF <sup>2)</sup>	ROTINA 380	12,969	12,969	12,745	12,410	13,304	13,528	12,745	12,745	12,745	13,081	12,745	12,410	12,410	12,969	13,528
max. RCF <sup>2)</sup>	ROTINA 380 R	15,692	15,692	15,422	15,016	16,098	16,369	15,422	15,422	15,422	15,828	15,422	15,016	15,016	15,692	16,369
radius in mm	116	116	114	111	119	121	114	114	114	117	114	111	111	111	116	121
<b>Cat. No.</b>	<b>microliter tubes</b>		<b>tubes<sup>2)</sup></b>				<b>blood collection tubes / urine tubes</b>			<b>tubes with screw cap</b>						



### Adapter

boring Ø x L in mm	11.4 x 39	11.4 x 39	17.5 x 91.5	26 x 85	35 x 89	38.4 x 89.3	17.5 x 91.5	17.5 x 91.5	17.5 x 91.5	17 x 106	29.8 x 96.7	16.5 x 74	26 x 85	29 x 92	38.4 x 89
vessels per rotor	24	24	6	6	6	6	6	6	6	6	6	12	6	6	6
<b>Cat. No.</b>	<b>1449</b>	<b>1449</b>	<b>1451</b>	<b>1447</b>	<b>1463</b>	-	<b>1451</b>	<b>1451</b>	<b>1451</b>	<b>1466</b>	<b>1454</b>	<b>1448</b>	<b>1447</b>	<b>1446</b>	-

### Vessels

capacity in ml	94	
Ø x L in mm	38 x 102	
max. RCF <sup>2)</sup>	ROTINA 380	13,528
max. RCF <sup>2)</sup>	ROTINA 380 R	16,369
radius in mm	121	
<b>Cat. No.</b>	<b>-</b>	



### Adapter

boring Ø x L in mm	38.4 x 89
vessels per rotor	6
<b>Cat. No.</b>	<b>-</b>

1) For cooled versions: Lowest temperature achievable with precooling and max. speed.  
 2) Please note that the RCF values indicated refer only to rotor performance. The max. permissible RCF of tubes used should be verified with the individual manufacturers. The max. RCF for glass tubes annotated with footnote 2) is 4,000.

## ANGLE ROTOR, 6-PLACE | 1792



### Rotor

max. RPM	ROTINA 380   380 R	10,000 min <sup>-1</sup>   11,000 min <sup>-1</sup>
max. RCF		13,640   16,504
max. capacity		6 x 94 ml
run-up   run-down, braked in sec		40 / 37   48 / 44
angle   max. noise level		45°   59 dB (A)
temperature in °C <sup>1)</sup>		+4
<b>Cat. No.</b>		<b>1792</b>

+ lid bioseal<sup>5)</sup>

Cat. No.

**INCLUSIVE**



### Vessels

capacity in ml	1.5	2.0	15	25	50	94	7.5-8.2	9-10	10	8.5-10	5	15	50	10	30	
Ø x L in mm	11 x 38	11 x 38	17 x 100	24 x 100	34 x 100	38 x 102	15 x 92	16 x 92	15 x 102	16 x 100	17 x 59	17 x 120	29 x 115	16 x 80	26 x 95	
max. RCF <sup>2)</sup>	ROTINA 380	13,081	13,081	12,857	12,522	13,416	13,640	12,857	12,857	12,857	12,857	12,745	13,081	13,304	12,857	12,522
max. RCF <sup>2)</sup>	ROTINA 380 R	15,828	15,828	15,557	15,151	16,233	16,504	15,557	15,557	15,557	15,557	15,422	15,828	16,098	15,557	15,151
radius in mm	117	117	115	112	120	122	115	115	115	115	114	117	119	115	112	
<b>Cat. No.</b>	<b>microliter tubes</b>			<b>tubes<sup>3)</sup></b>			<b>blood collection tubes / urine tubes</b>				<b>tubes with screw cap</b>					



### Adapter

boring Ø x L in mm	11.4x39	11.4x39	17.5x92	26x85	35x89	38.2x89.6	17.5x92	17.5x92	17.5x92	17.5x92	17x51	17x106	29.8x97	16.5x74	26x85
vessels per rotor	24	24	6	6	6	6	6	6	6	6	6	6	6	12	6
<b>Cat. No.</b>	<b>1449</b>	<b>1449</b>	<b>1451</b>	<b>1447</b>	<b>1463</b>	-	<b>1451</b>	<b>1451</b>	<b>1451</b>	<b>1451</b>	<b>1476</b>	<b>1466</b>	<b>1454</b>	<b>1448</b>	<b>1447</b>

### Vessels

capacity in ml	50	85	
Ø x L in mm	29 x 107	38 x 106	
max. RCF <sup>2)</sup>	ROTINA 380	13,081	13,640
max. RCF <sup>2)</sup>	ROTINA 380 R	15,828	16,504
radius in mm	117	122	
<b>Cat. No.</b>	<b>tubes with screw cap</b>		



### Adapter

boring Ø x L in mm	29 x 92	38.2 x 89.6
vessels per rotor	6	6
<b>Cat. No.</b>	<b>1446</b>	-

1) For cooled versions: Lowest temperature achievable with precooling and max. speed.  
 2) Please note that the RCF values indicated refer only to rotor performance. The max. permissible RCF of tubes used should be verified with the individual manufacturers. The max. RCF for glass tubes annotated with footnote 2) is 4,000.  
 5) Tested by TÜV in conformity with DIN EN 61010, section 2-020.

## — ANGLE ROTOR, 30-PLACE | 1789-A



### Rotor

max. RPM   max. RCF	15,000 min <sup>-1</sup>   24,400 min <sup>-1</sup>
max. capacity	30 x 2 ml
run-up   run-down, braked in sec	24   24
angle   max. noise level	45°   60 dB (A)
temperature in °C <sup>1)</sup>	+4
<b>Cat. No.</b>	<b>1789-A</b>

Lid bioseal<sup>®</sup>,  
phenol-resistant

Cat. No.

**INCLUSIVE**



### Vessels

capacity in ml	0.2	0.4	0.5	0.8	1.5	2
Ø x L in mm	6x18	6x45	8x30	8x45	11x38	11x38
max. RCF <sup>2)</sup>	24,400	24,400	24,400	24,400	24,400	24,400
radius in mm	97	97	97	97	97	97
<b>Cat. No.</b>	<b>microliter tubes</b>					



### Adapter

boring Ø x L in mm	6 x 40	6 x 40	8 x 40	8 x 40	10.2x19.3	11.2x40.9
vessels per rotor	30	30	30	30	30	30
<b>Cat. No.</b>	<b>2024</b>	<b>2024</b>	<b>2023</b>	<b>2023</b>	<b>2031<sup>7)</sup></b>	<b>-</b>



- 1) For cooled versions: Lowest temperature achievable with precooling and max. speed.
- 2) Please note that the RCF values indicated refer only to rotor performance. The max. permissible RCF of tubes used should be verified with the individual manufacturers. The max. RCF for glass tubes annotated with footnote 2) is 4,000.
- 5) Tested by the TÜV in conformity with DIN EN 61010, section 2-020.
- 7) For centrifugation at high speeds, we recommend to use form-fitting, phenol-resistant adapters. Cat. No. 2031.
- 17) Packaging unit 15 pieces.

## — PACKAGES

ROTINA 380 BLOOD TUBE PACKAGE 1		number of vessels	volume (ml)	size (mm)	RPM	RCF
- 1 x ROTINA 380 centrifuge	1701	64	1.6 - 7	13 x 90 / 100	5,000	4,668
- 1 x swing-out rotor, 4-place	1754	52	4 - 10	17 x 100	5,000	4,668
- 4 x bucket	1752					
- 4 x lid (bioseal)	1751					
- 4 x adapter, 16-place	1783-A					
- 4 x adapter, 13-place	1763-A					
<b>1701SET1</b>						



ROTINA 380 CONICAL PACKAGE 2		number of vessels	volume (ml)	size (mm)	RPM	RCF
- 1 x ROTINA 380 centrifuge	1701	36	15	17 x 120	5,000	4,863
- 1 x swing-out rotor, 4-place	1754	16	50	29 x 115	5,000	4,863
- 4 x bucket	1752					
- 4 x adapter, 9-place (conical)	1771-A					
- 4 x adapter, 4-place (conical)	1772-A					
<b>1701SET2</b>						



ROTINA 380 R CONICAL PACKAGE 1		number of vessels	volume (ml)	size (mm)	RPM	RCF
- 1 x ROTINA 380 R centrifuge	1706	36	15	17 x 120	5,000	4,863
- 1 x swing-out rotor, 4-place	1754	16	50	29 x 115	5,000	4,863
- 4 x bucket	1752					
- 4 x adapter, 9-place (conical)	1771-A					
- 4 x adapter, 4-place (conical)	1772-A					
<b>1706SET1</b>						



ROTINA 380 R BLOOD TUBE PACKAGE 2		number of vessels	volume (ml)	size (mm)	RPM	RCF
- 1 x ROTINA 380 R centrifuge	1706	64	1.6 - 10	13 x 90 / 100	5,000	4,668
- 1 x swing-out rotor, 4-place	1754	52	4 - 15	17 x 100	5,000	4,668
- 4 x bucket	1752					
- 4 x lid (bioseal)	1751					
- 4 x adapter, 16-place	1783-A					
- 4 x adapter, 13-place	1763-A					
<b>1706SET2</b>						





***LABORATORY EQUIPMENT MAINTENANCE, REPAIR, CALIBRATION AND SALES***

Established in 1987, Henderson Biomedical is the UK's leading laboratory equipment sales and service provider. Our knowledgeable team can provide you with excellent sales advice on a range of different types of laboratory equipment including centrifuges, refrigerators, freezers and heat sealers.

Henderson Biomedical is also able to provide you with first class after-sales service and calibration of your laboratory equipment. We are an **ISO 17025 (UKAS) accredited calibration test laboratory** and our team of Field Service Engineers cover the whole of the United Kingdom.

Please contact us for more information on the types of equipment we supply and the different after-sales services we can offer.

**Henderson Biomedical**

Unit 3, Swan Close  
Croydon CR0 2DZ  
United Kingdom

**Tel: 020 8663 4610**

**For sales enquiries: [sales@henderson-biomedical.co.uk](mailto:sales@henderson-biomedical.co.uk)  
For all other enquiries: [info@henderson-biomedical.co.uk](mailto:info@henderson-biomedical.co.uk)  
[www.henderson-biomedical.co.uk](http://www.henderson-biomedical.co.uk)**

