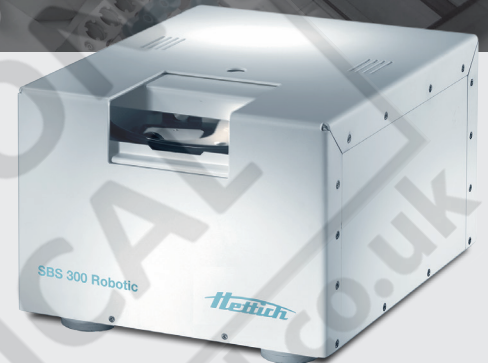


AUTOMATED CENTRIFUGES

SBS 300 ROBOTIC

ESSENTIAL AND MODULAR

The SBS 300 ROBOTIC is a front-loading centrifuge, developed and optimized for microplates in high-throughput screening. It can be loaded frontally via the xy-axes, as well as via the z-axis and is particularly suitable for collaborative robotic systems. The compact design opens up a wide range of applications in automation. The robust construction, ensures increased safety and durability – especially in high throughput and continual use environments.



HIGHLIGHTS

- Max. RPM: 6,300 min⁻¹
- Max. RCF: 4,615
- Max. capacity: 2 microtiter plates (max. 128x86x46 mm)
- Loading & unloading hatch for front or top loading
- Hatch opening time < 6 seconds
- Fast + Slow positioning mode
- Positioning time of 5 seconds
- Positioning accuracy +/- 0,5° tolerance
- Imbalance tolerance 50 g
- Max. noise level 68 dB(A)
- Internal air cooling

FEATURES

- Metal housing and lid
- Stainless steel inner chamber
- Automatic rotor recognition
- Error display (optional)
- Imbalance switch-off
- Overtemperature fuse
- Interface via RS 232
- Overcurrent limitation when closing the hatch
- Manual operation via key switch possible

TECHNICAL DATA

SBS 300 ROBOTIC air cooled

voltage *)	200-240 V 1~
frequency	50-60 Hz
consumption	1.800 VA
max. capacity	2 microtiter plates (max. 128x86x46 mm)
max. RPM	6,300 min ⁻¹
max. RCF	4,615
Permissible density of the centrifuged material	1.2 kg/dm ³
dimensions (WxDxH)	412x508x313 mm
weight	approx. 80 kg
Cat. No.	8300

SWING-OUT, 2-PLACE | 8322-R

Rotor	
max. RPM max. RCF ²⁾	6,300 min ⁻¹ 4,615
max. capacity	2 microtiter plates
run-up run-down, braked in sec	63 / 29
angle temperature in °C ¹⁾	90° 4 °C
Cat. No.	8322-R

Bucket	
Cat. No.	8330-R/2

Plates		
W x D x H in mm	128x86x44,5	128x86x46
capacity in ml	-	-
max. RCF ²⁾	4,615	4,615
radius in mm	104	104
plates per rotor	2	2
Cat. No.	DWP	MS

1) For cooled versions: Lowest temperature achievable with precooling and max. speed.

2) Please note that the RCF values indicated refer only to rotor performance. The max. permissible RCF for the microtiter plates used should be verified with the individual manufacturers.

CERTIFICATIONS / REGISTRATIONS

Product certification: Company certifications:





LABORATORY EQUIPMENT MAINTENANCE, REPAIR, CALIBRATION AND SALES

Established in 1987, Henderson Biomedical is the UK's leading laboratory equipment sales and service provider. Our knowledgeable team can provide you with excellent sales advice on a range of different types of laboratory equipment including centrifuges, refrigerators, freezers and heat sealers.

Henderson Biomedical is also able to provide you with first class after-sales service and calibration of your laboratory equipment. We are an **ISO 17025 (UKAS) accredited calibration test laboratory** and our team of Field Service Engineers cover the whole of the United Kingdom.

Please contact us for more information on the types of equipment we supply and the different after-sales services we can offer.

Henderson Biomedical

Unit 3, Swan Close
Croydon CR0 2DZ
United Kingdom

Tel: 020 8663 4610

For sales enquiries: sales@henderson-biomedical.co.uk
For all other enquiries: info@henderson-biomedical.co.uk
www.henderson-biomedical.co.uk

