

# Mapping Service

*When Quality and Efficiency are important*



**Product ID: EU-MAP-SP**

Revision: 2.0

**eupry**

Dortheavej 59, 3.  
2400 Copenhagen NV  
Denmark  
+45 53 51 77 00  
[www.eupry.com](http://www.eupry.com)  
[contact@eupry.com](mailto:contact@eupry.com)

MADE IN DENMARK

© 2019 Eupry ApS. All right reserved. Content is subject to change without notice.



**DANAK**  
THE QUALITY EXPERT

**eupry**

# Mapping Service

## Product ID: EU-MAP-SP

Revision: 2.1

### Why Temperature Mapping?

Temperature mapping is a crucial part of initiating the use of temperature controlled equipment for keeping temperature sensitive assets. The purpose of a temperature mapping is to identify zones of the equipment that can be used for storing temperature sensitive assets, identifying where to place temperature monitoring and to validate the compliance of a piece of temperature controlled equipment towards requirements for homogeneity and stability.

**With Eupry, after mapping is complete, you will receive a comprehensive, GxP compliant mapping report for your equipment.**

### Mapping Environments:

- Warehouses
- Clean rooms
- Containers
- Freezers & ULT freezers
- Trucks, vans or complete fleets
- Thermal packaging and boxes
- Refrigerators

### Our Service:



#### ISO 17025 Accredited Laboratory & Calibrations

Highly accurate calibrations, as well as an exceptional level of expertise.



#### Calibration Certificates

Receive option for START and END calibration certificates.



#### Minimum delays and downtime

Follow the mapping wireless & live enables faster corrective actions and faster completion



#### Save Internal Resources

Eupry offers complete mapping reports of storage conditions.



#### Single Point of Contact

You will be assigned one of our highly experienced engineers as your point of contact.



#### GxP Compliant

Our mapping reports exceed GxP requirements with supplied, verifiable accuracies.



#### No Installation

We conduct mappings using wireless technology, providing a non-invasive solution.



#### Industry Leading Monitoring Experience

We have performed countless mappings, rest assured with our highly skilled team.



#### Comprehensive Reporting

Receive a full report of your project, digitally prepared and formally signed off.

eupry

Dortheavej 59, 3.  
2400 Copenhagen NV  
Denmark  
+45 53 51 77 00  
[www.eupry.com](http://www.eupry.com)  
[contact@eupry.com](mailto:contact@eupry.com)

MADE IN DENMARK

© 2019 Eupry ApS. All right reserved. Content is subject to change without notice.



eupry

# Mapping Equipment

Product ID: EU-MAP-SP

Revision: 2.1

The most efficient mapping solution  
on market

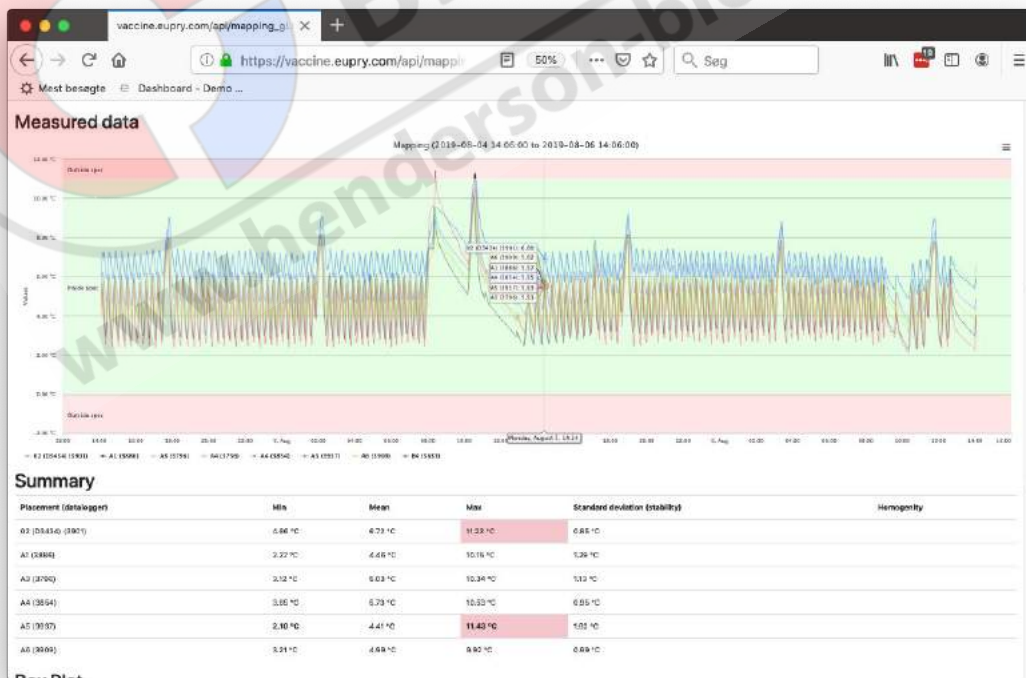
Save 50% time

## Data loggers

- Data loggers comes in a handy mobile box.
- Eupry deliver in all quantities from just a few to several hundreds at a time.
- The solution is plug and play, delivered with connection units and other useful utilities.

## Online Software

- A unique software tool to perform mappings from Eupry are available as part of the kit.
- The mapping software is making the exercise easy and fast to perform.
- Instantly the user gets averages, min. and max. measurements.
- Print out compliant reports from the system and download raw data from the system.



Dortheavej 59, 3.  
2400 Copenhagen NV  
Denmark  
+45 53 51 77 00  
[www.eupry.com](http://www.eupry.com)  
[contact@eupry.com](mailto:contact@eupry.com)

MADE IN DENMARK  
© 2019 Eupry ApS. All right reserved. Content is subject to change without notice.



# Mapping Service

**Product ID: EU-MAP-SP**

Revision: 2.1

## Typical Process

### Step 1

Create a mapping plan

### Step 2

Check the documentation of the measuring equipment

### Step 3

Set up your measuring equipment

### Step 4

Data analysis & data result

### Step 5

Document and evaluate results

Temperature mapping is to establish the temperature distribution within a specific zone and to locate hot and cold spots. Please refer to the following guideline for more details:

[World Health Organization Technical Report Series, No.961, 2011](#)

## Considerations

- Total duration of temperature mapping process?
- Sampling interval of each data logger?
- Total number of data loggers required?
- Calibration requirement of data loggers?
- Type of loading conditions required to be tested?
- What are the documents required?
- What do the auditors want to see?
- Validity of the temperature mapping report?
- How often should you be doing temperature mapping?
- What are the recommended requirements for a temperature and humidity monitoring system?

## Differentiation

We do not just map your cold and hot spots, we also provide options for following; Door Opening Test, Power Failure Test & Genset / Alt Power Test

### Value-added service:

Speed & momentum is everything- Eupry **reduce mapping time needed** and **reduces down time**.

We do it with Euprys live monitoring system. Enabling you and us to follow the process and proceed/restart when the results are achieved.

NO USB-LOGGERS = **NO NEEDLESS DELAY**



eupry

Dortheavej 59, 3.  
2400 Copenhagen NV  
Denmark  
+45 53 51 77 00  
[www.eupry.com](http://www.eupry.com)  
[contact@eupry.com](mailto:contact@eupry.com)

MADE IN DENMARK  
© 2019 Eupry ApS. All right reserved. Content is subject to change without notice.



eupry